

# CROP : POTATO - *BINTJE*

Trial carried out in France in 2003

## TRIAL LOCATION

TRIAL N° :	D/F/PDT/03/09	Crop information
59270 METEREN North East of France		Variety : <b>Bintje</b> Planting date : 24 april 2003 Density of planting : 40.000 plants/ha Soil type : Loam Irrigation : none Date of chemical defoliation: 13 september 2003

## APPLICATIONS DETAILS

	Spraying date	Dose rate	Crop stage at application	Volume of water	Remarks
Application N°1	05/07/03	5 l/ha	Early tuber formation (tuber size of a grain of wheat)	300 l/ha	Applied alone
Application N°2	15/08/03	5 l/ha	3 weeks before chemical defoliation	300 l/ha	Applied alone

## MATERIALS AND METHODS

Plot size : 1 ha  
Blocks number : 6 samplings per treatment on one row and 3 metres long  
Application method : Foliar spray  
Equipment used : Farmer's tractor mounted sprayer equipped with a boom

## DISCUSSION, CONCLUSION

The weather conditions were favourable to a good crop development.

The effect of AMINOFIT.Xtra applied twice during the season is significant on the total weight of tubers: +18.6% increase to the control. Some effect is recorded on the tubers size: 64 % of the tubers are over calibre 45 in the AMINOFIT.Xtra plots compared to 60% in the control plots.

The cumulative effects on the number of tuber plus the size increase lead to a significant yield enhancement.

No visual effect was seen on the foliage during the crop duration.

## RESULTS

### Weight of tubers

Date of assessment	30/09/03 = 46 days after last application								
Crop stage	Maturity								
Type of record	Weight of tubers calibre 28	Weight of tubers calibre 35	Weight of tubers calibre 40	Weight of tubers calibre 45	Weight of tubers calibre 50	Weight of tubers calibre 55	Weight of tubers calibre 60	Weight of tubers calibre 65	Weight of tubers calibre 70
<b>AMINOFIT.Xtra</b>	171.7 (a)	397.7 (a)	830.7 (a)	1289.7 (b)	2457.7 (a)	2798.0 (a)	2200.3 (a)	1496.7 (a)	721.7 (a)
<b>Control</b>	184.0 (a)	495.3 (a)	728.0 (a)	1542.3 (a)	2222.3 (a)	2450.0 (a)	1501.0 (a)	1053.3 (a)	246.3 (a)

### Number of tubers

Date of assessment	30/09/03 = 46 days after last application								
Crop stage	Maturity								
Type of record	Number of tubers calibre 28	Number of tubers calibre 35	Number of tubers calibre 40	Number of tubers calibre 45	Number of tubers calibre 50	Number of tubers calibre 55	Number of tubers calibre 60	Number of tubers calibre 65	Number of tubers calibre 70
<b>AMINOFIT.Xtra</b>	18.0 (a)	15.2 (b)	20.0 (a)	20.7 (b)	27.5 (a)	23.0 (a)	13.3 (a)	6.8 (a)	1.7 (a)
<b>Control</b>	19.3 (a)	20.0 (a)	17.5 (a)	24.5 (a)	24.5 (a)	19.7 (a)	9.3 (b)	5.0 (a)	0.8 (a)

### Total number and weight of tubers

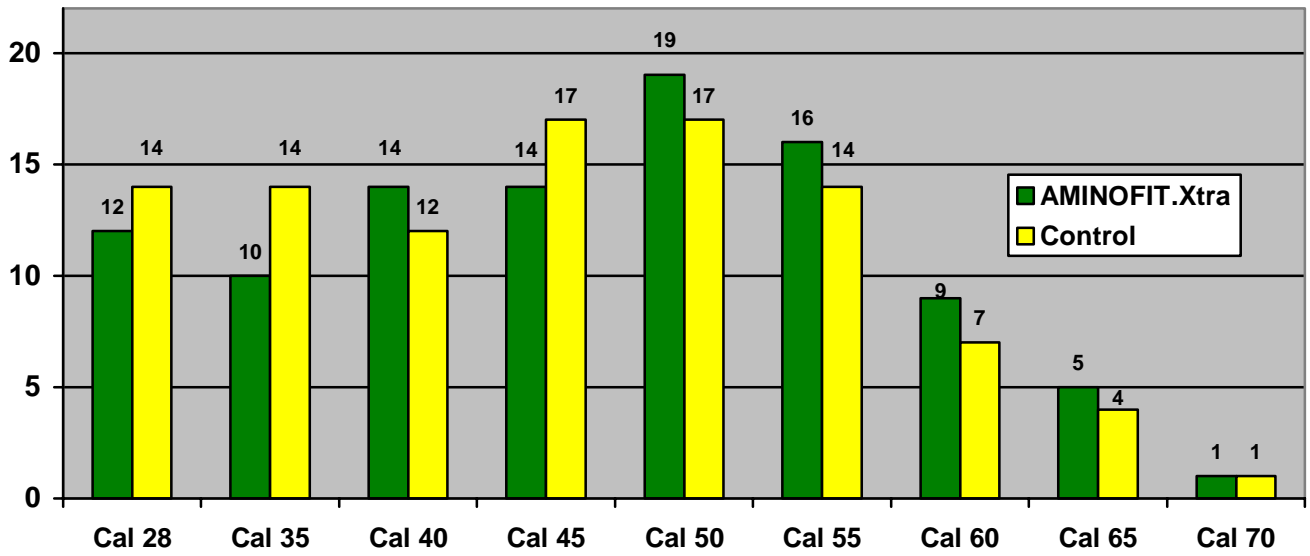
Date of assessment	30/09/03 = 46 days after last application	
Crop stage	Maturity	
Type of record	Total number of tubers	Total weight of tubers in kg
<b>AMINOFIT.Xtra</b>	146.2 (a)	12.364 (a)
<b>UNTREATED CONTROL</b>	140.7 (a)	10.423 (b)
% control	+ 3.9	+18.6

### Percent of tubers by size

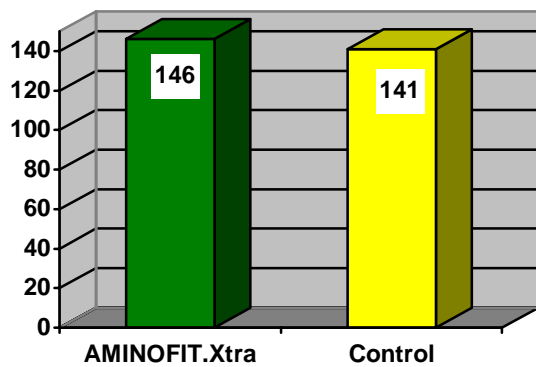
Date of assessment	30/09/03 = 46 days after last application								
Crop stage	Maturity								
Type of record	% tubers calibre 28	% tubers calibre 35	% tubers calibre 40	% tubers calibre 45	% tubers calibre 50	% tubers calibre 55	% tubers calibre 60	% tubers calibre 65	% tubers calibre 70
<b>AMINOFIT.Xtra</b>	12.3	10.4	13.7	14.2	18.8	15.7	9.1	4.7	1.2
<b>UNTREATED CONTROL</b>	13.7	14.2	12.4	17.4	17.4	14.0	6.6	3.5	0.6
% control	- 10.2	- 26.8	+ 10.5	-18.4	+ 8.0	+ 12.1	+ 37.9	+ 34.3	+ 50

GRAPHS

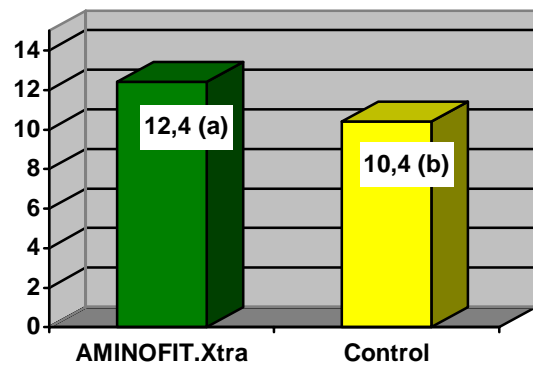
% of tubers per calibre



Number of tubers



Weight of tubers per plot in Kg



Calculated yield in T/ha, (from calibres 40 and more)

